

NTools MTABLE

Mobile work bench along with bag holder and wiper dispenser

APP No. 170503

NTools MTABLE features with robust structure purposed mainly for delivery of **simple works**. It is provided with 4 swivel casters with **brake** to ensure total mobility.

Table is also provided with laminated top made from veneered chipboard additionally protected with **rubber mat 3mm thick**.

A bag holder and wiper dispenser may be installed optionally also.

ADVANTAGES:



EASY AND QUICK
ASSEMBLY



SAVES SPACE,
TIME AND MONEY



HIGH
MOBILITY

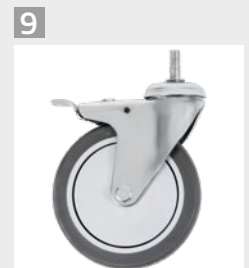
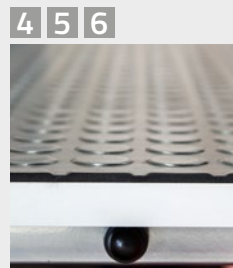
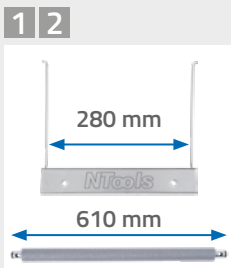
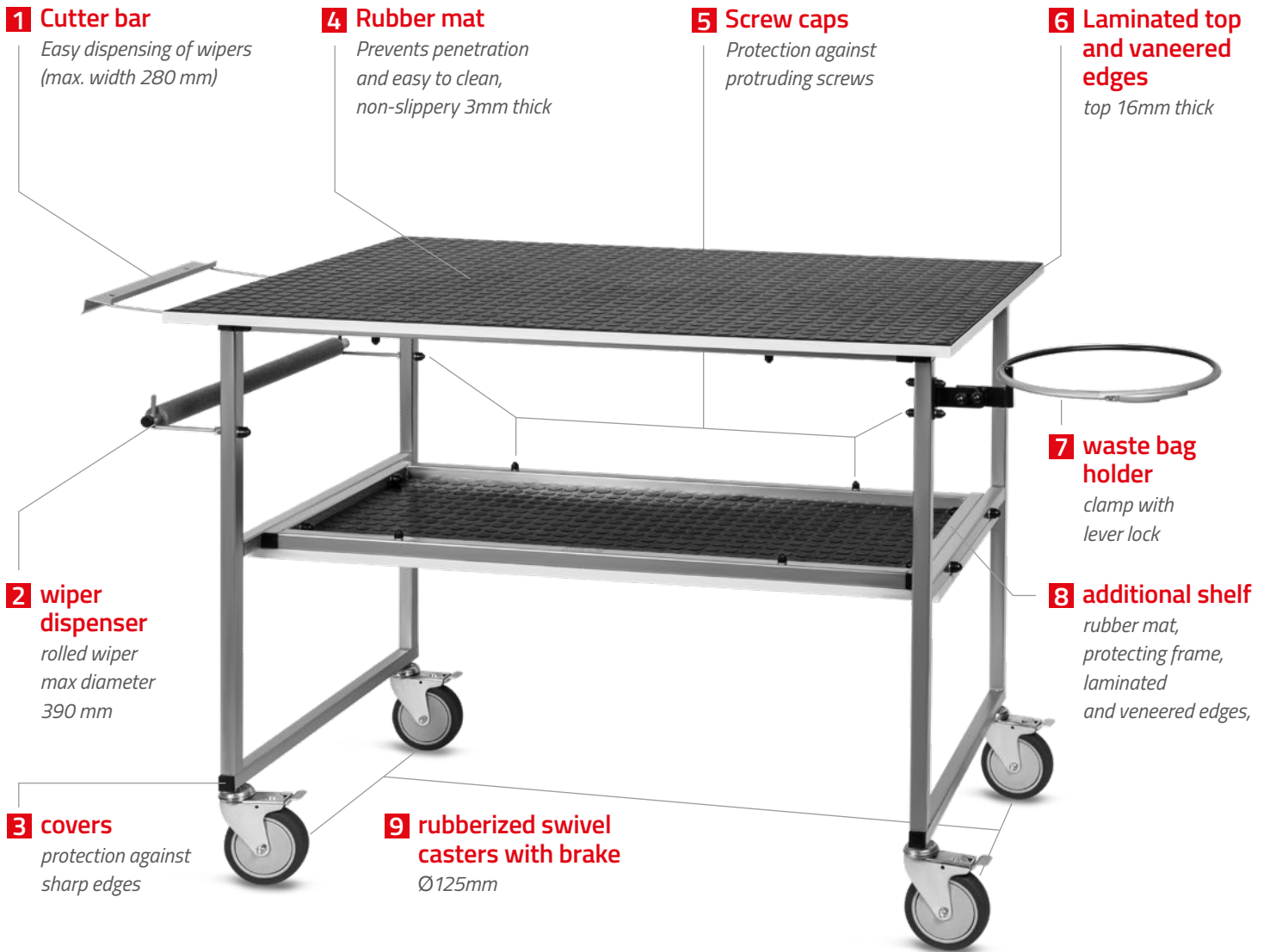


NTools MTABLE

Mobile work bench
along with bag holder and wiper dispenser

Budowa:

NTools



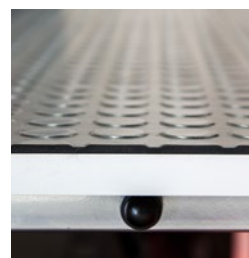
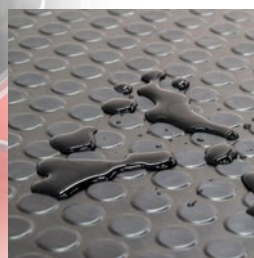
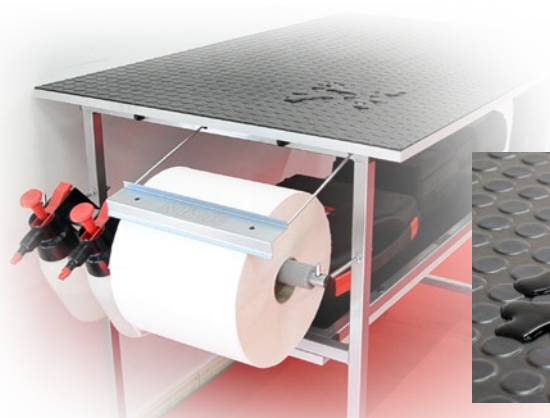
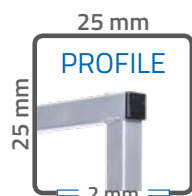
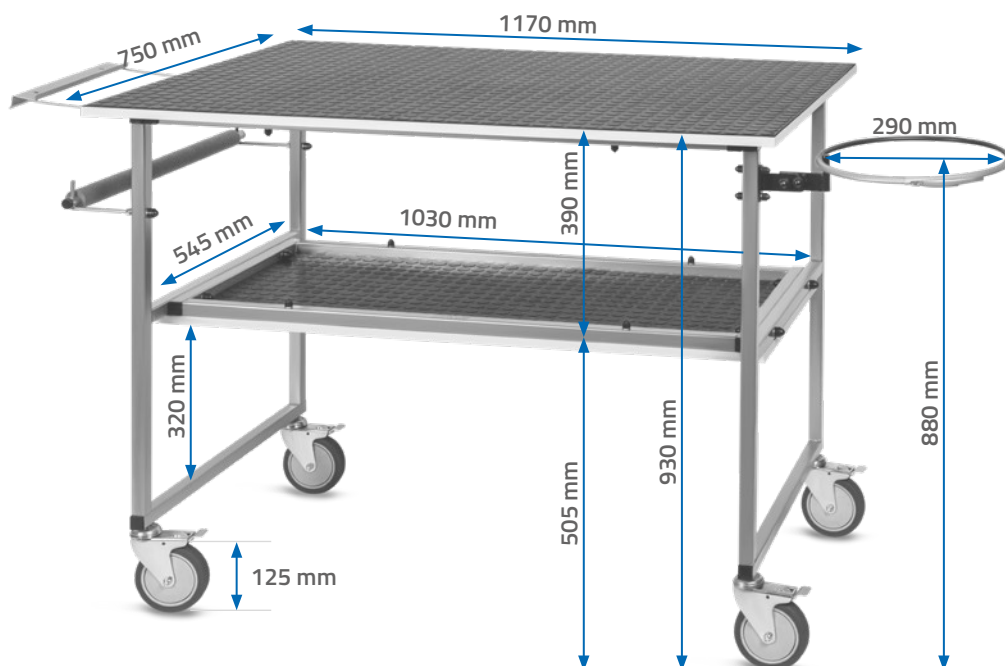
NTools MTABLE

Mobile work bench
along with bag holder and wiper dispenser

Technical Data:



Top dimensions	1170x750x16 mm
Shelf dimensions	980x400 mm
Profile	25x25x2 mm
Holder internal diameter	290 mm
Swivel casters with brake	125 mm (gumowane)
Load capacity	100 kg
Net/gross weight	38 kg / 41 kg
Height	930 mm
Total length	1670 mm



ADVANTAGES

+
ROBUST AND LIGHT
CONSTRUCTION

+
MULTI-PURPOSE
AND FUNCTIONAL

+
EASILY
OPERATED

APP No.	Product Description	Qty
170503	Mobile work bench along with bag holder and wiper dispenser	1